

*Visual
Communication*
DESIGN

TUAN HUYNH

773.987.1229
HELLO@JohnISCREATIVE.com

Orbit Gum
August 16

Unlike ants, some picnic crashers don't leave even when the food is all gone!

Like · Comment · Share

495 12 21

Like · Comment · Share 729 42 36

Orbit Gum
August 5

What athlete do you think should win this medal?

Like · Comment · Share

448 18 12

Orbit Gum
August 11

I just won gold in the Clean-athlon! Thanks for helping me train, friends!

Like · Comment · Share

1,311 197 35

Orbit Gum
August 4

When camping I pack only the ess

Like · Comment · Share

989 74 21

Like · Comment · Share

989 74 21

Orbit Gum
August 19

Greetings from the Isle of Wight Garlic Festival! Wish you were here, friends!

Like · Comment · Share

428 24 3

Orbit Gum
July 4

Have a fabulous 4th celebration, friends!

Like · Comment · Share

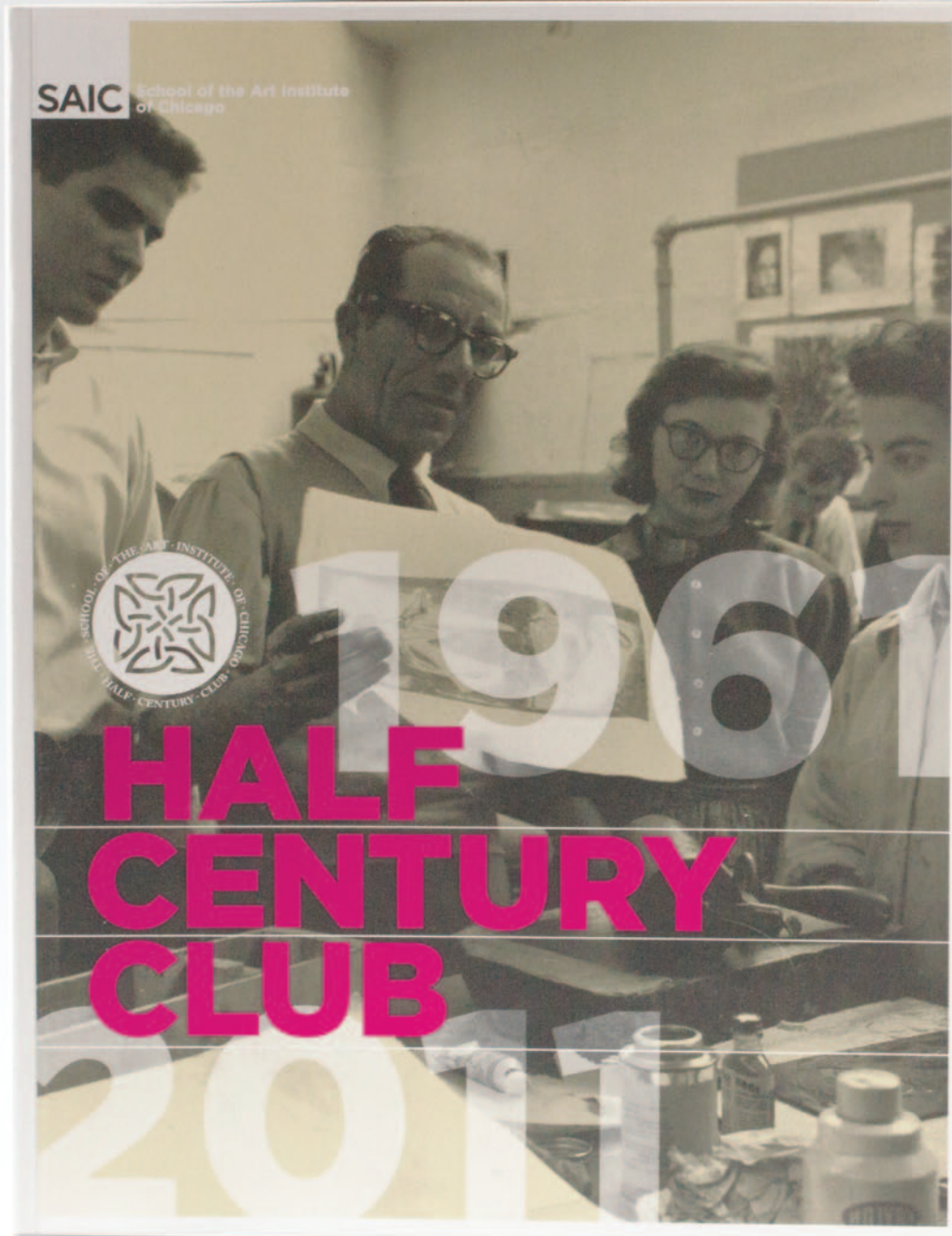
769 24 15

Orbit Gum
August 4

Happy Happy National National Twin Twin Day Day!

Like · Comment · Share

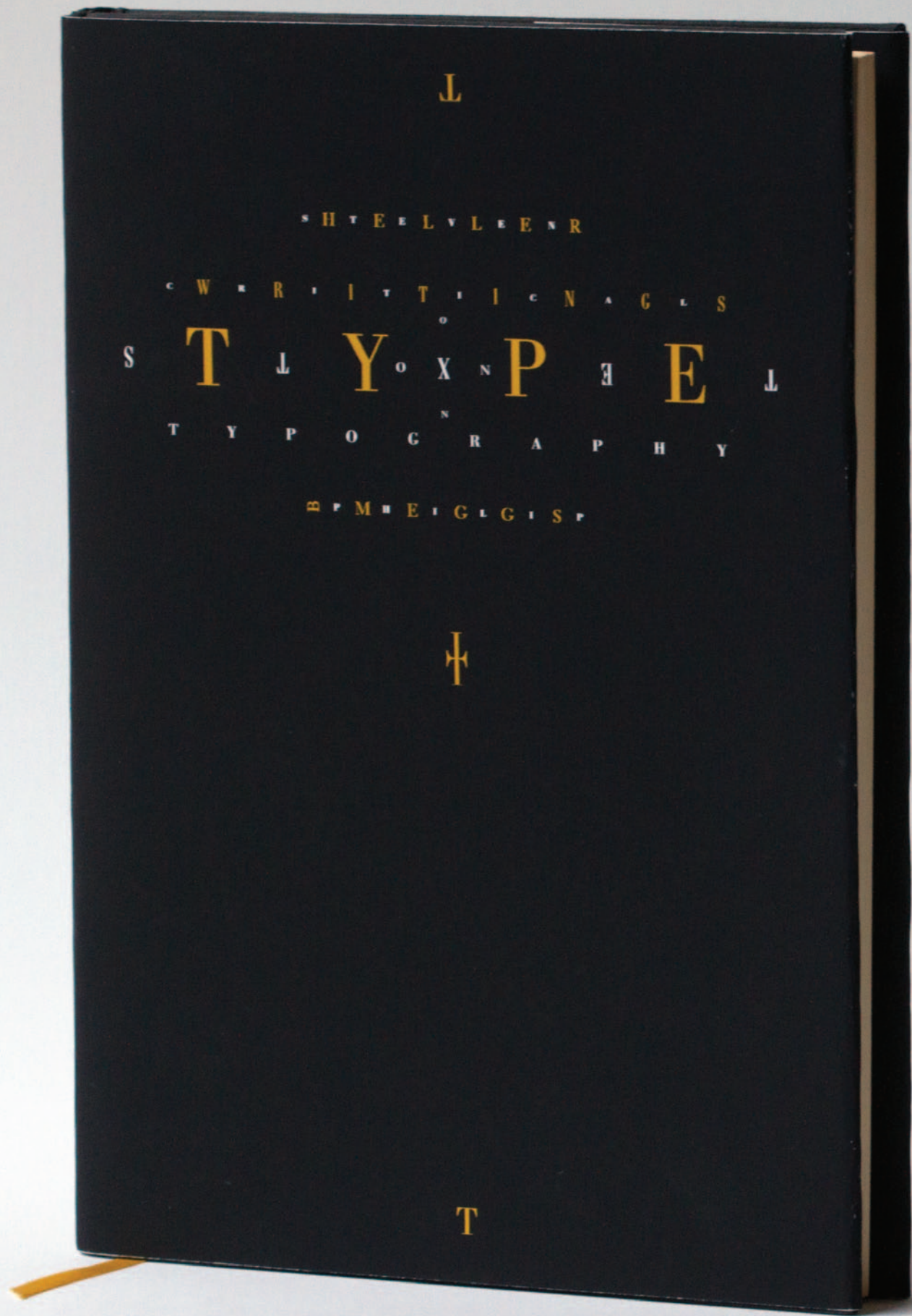
1,538 52 58




FOR MORE INFORMATION ABOUT THE SCHOOL OF THE ART INSTITUTE OF CHICAGO HALF CENTURY CLUB
 please visit our website at tinyurl.com/SAIC-HalfCentury
 Or contact the Alumni Relations office at:
ALUMNI RELATIONS
 School of the Art Institute of Chicago
 36 South Wabash, suite 1204
 Chicago, Illinois 60603
 312.629.6829
alumni@saic.edu



SAIC Half Century Club Book | Book design for SAIC alums reaching the 50th anniversary of earning their SAIC degrees



Texts on Type Book Redesign | Redesign of "Texts on Type: Critical Writings on Typography" by Steven Heller & Philip B. Meggs

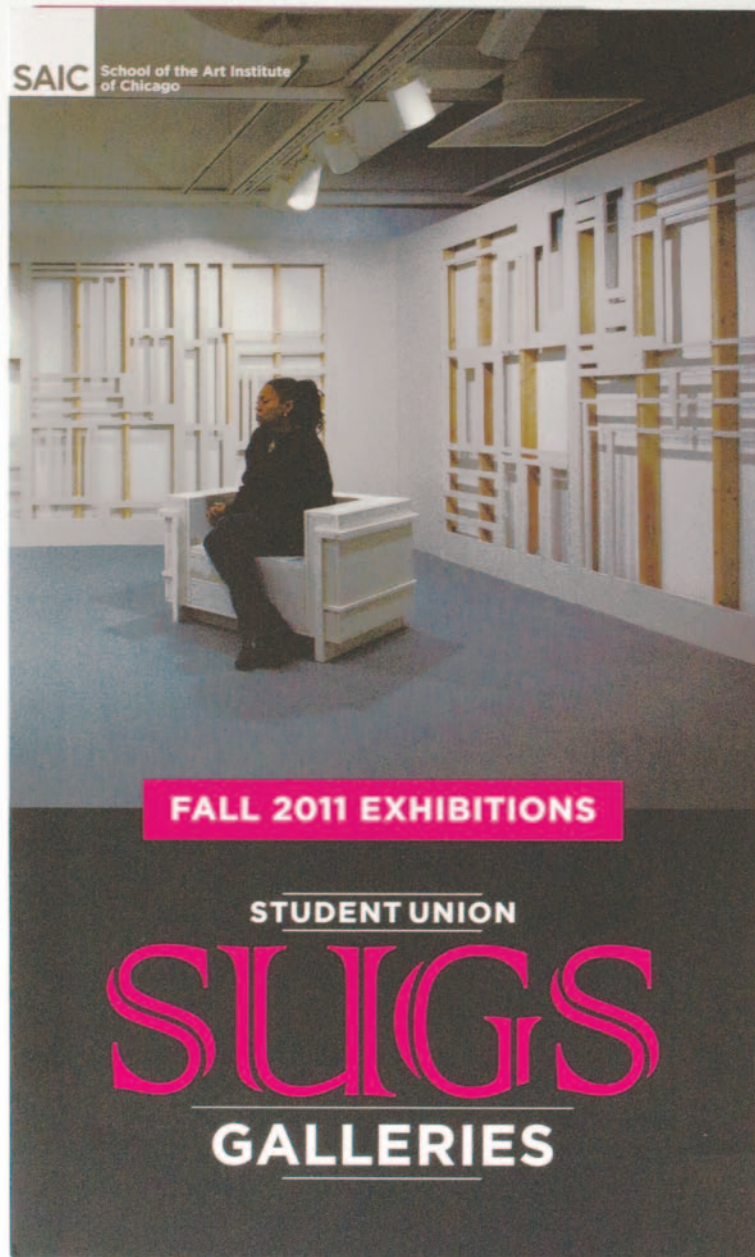
PRODUCT OF
THOUGHT 



PRODUCT OF
THOUGHT



Motorola X Product of Thought | Dark Drama | Branding, graphic, package, and product designed and conceptualized while an intern for Motorola's Consumer Experience Design dept.



FALL 2011 EXHIBITIONS

STUDENT UNION
SUGS
GALLERIES

SAIC School of the Art Institute of Chicago

SUGS

Founded in 1994, the Student Union Galleries (SUGs) at the School of the Art Institute of Chicago (SAIC) has established itself as a staple of SAIC's student life—a place where student artists and curators can challenge their work in a public setting. SUGs is run by five student directors under the guidance of faculty advisor, Michael x. Ryan. Producing between 9 and 12 exhibitions of student work each year, SUGs facilitates programs that provide a more open exchange for students across disciplines and departments, as well as with vital members of Chicago's art community. Many of SUGs alumni, both directors and exhibiting artists, have made substantial contributions to the arts in Chicago, and have built valuable careers in the arts both nationally and internationally.

A NOTE FROM THE DIRECTORS

Fall is typically a season for transformation at The School of the Art Institute of Chicago as we welcome new students, faculty, and projects. The Student Union Galleries (SUGs) are no exception to this. This semester SUGs will be undergoing some changes of our own as we transition to a new team of directors, develop our website and social networking, and look ahead to changes in gallery locations through the Spring of 2012.

Through six competing shows, the breadth of work exhibited this semester at Gallery X and Parallax Gallery reflects on the artist's individual character and illustrates a preoccupation and concern with the deteriorations and developments of our physical and social world. Ranging from the artists' investigations of types such as the anti-hero, which begs viewers for a direct emotional response, to the sentimental attachment of one artist's conflicted relationship with a self-taught ballet practice, the viewers are invited to participate in a multitude of relationships embodied within the work ranging from alienation to seduction, reflexivity and interpretation. Being investigations, our open call for student submissions, will give this schedule of exhibitions in providing an opportunity for examination as we ask artists to reconsider the role that research plays in the development of their work.

As we look ahead to the changes signaling the growth of SUGs and its significance as a pedagogical tool for developing artists and arts administrators, we will also be taking the opportunity to look back at the success of the past 17 years of operation. Thanks to its past exhibitors and directors, SUGs has built a rich identity with a history of successful artists and exhibitions. We plan on making this archive available to both the SAIC community and the public. Through new developments on our website, we will be publicizing some of SUGs' brightest moments, ones that we feel sure will be joined in achievement by our upcoming exhibitions.

We eagerly look forward to having you join us in both Gallery X and Parallax Gallery for the Fall program, including exhibitions, panel discussions, and social events, designed to bring the SAIC community closer in sharing their work and ideas on a broader platform.

Our very best wishes for a warm and welcome Fall semester,

Rebecca Hernandez, Stephanie Cristello,
John Tuan Huynh, Joe Mault, Tara Plath

SAIC School of the Art Institute of Chicago

SUGs DIRECTORS

Rebecca Hernandez
Administrative Director
rherna3@saic.edu

Stephanie Cristello
Marketing Communications Director
scrist@saic.edu

John Tuan Huynh
Design Communications Director
thuynh@saic.edu

Joe Mault
Installation Director
jmault@saic.edu

Tara Plath
Installation Director
tplath@saic.edu

SUGs FACULTY ADVISOR

Michael x. Ryan
mryan3@saic.edu

SUGs MAIN OFFICE

36 S. Wabash Ave., suite 1405
Office | 312.629.6860
Fax | 312.629.6864



SAIC School of the Art Institute of Chicago

SUGS

Founded in 1994, the Student Union Galleries (SUGs) at the School of the Art Institute of Chicago (SAIC) has established itself as a staple of SAIC's student life—a place where student artists and curators can challenge their work in a public setting. SUGs is run by five student directors under the guidance of faculty advisor, Michael x. Ryan. Producing between 9 and 12 exhibitions of student work each year, SUGs facilitates programs that provide a more open exchange for students across disciplines and departments, as well as with vital members of Chicago's art community. Many of SUGs alumni, both directors and exhibiting artists, have made substantial contributions to the arts in Chicago, and have built valuable careers in the arts both nationally and internationally.

SUGs is a host to many exciting programs and events on campus throughout the school year. In order to allow exhibitors the opportunity to receive feedback on their exhibitions, SUGs exhibitions in the past have featured a variety of exhibition discussion panels and project talks. SUGs invites peers, mentors, colleagues, and arts professionals from the local scene and abroad to come into the gallery space and engage in critical discourse with the exhibiting artists. As SUGs undergoes major transformations this year, we look forward to reflecting on our programming and creating more accessible and interesting ways of challenging, and learning from student work. Students, faculty, and visitors are welcome and encouraged to participate.

Visit www.saic.edu/sugs to learn more about the program, exhibitions, and current and past exhibitors.

FALL 2011 EXHIBITIONS

GALLERY X

280 South Columbus Drive, Room 113
CHICAGO, IL 60602

312.467.7140

TUESDAY-FRIDAY: 11:00 a.m.-5:30 p.m. | SATURDAY: 10:30 a.m.-4:00 p.m.
Alternate hours available by appointment

SEISMIC INDUSTRY
AUGUST 31-SEPTEMBER 21, 2011
Opening Reception | Wednesday, August 31, 4:00-6:00 p.m.

The joining industrial production through repetition and pattern creation. **Robin Kang** (MFA 2012) examines interest in the process and advantage of specialized labor. Growing interest regarding industrial changes and technology's impact on production and exchange leads her to investigate and create discourses the current condition of work work since the booming industrial sites of the American northeast. Kang's mirroring techniques allude to multifaceted cultural reflection within industrial systems. The visual rhythms in *Seismic Industry* are evocative of energy vapor fluctuations and ancient geometric configurations, which when merged with video game graphics, result in a synthesis of artwork and observation.

PAS DES DEUX AND VARIATION
OCTOBER 6-27, 2011
Opening Reception | Thursday, October 6, 4:00-6:00 p.m.

The duo, *Pas des Deux* and *Variation* draw out of **Joel Parsons** (MFA 2012) conflictual relationship with material matter and the self. A *Variation*, in an attempt to navigate the territory between the virtuosic sentimental attachment and critical distance, begins to enact a piece of choreography created by her partner through multiple processes, each of which is grounded in his own self-taught ballet practice. Through a combination of sculpture, performance, and photography he extends through assembly but ultimately into the visual and material parts of another person, and in this process creates a space between the actual and the ideal, seduction and alienation, before and success.

PARALLAX GALLERY

280 South Columbus Drive, Room 122
CHICAGO, IL 60602

312.443.3703

TUESDAY-FRIDAY: 11:00 a.m.-8:30 p.m. | SATURDAY: 10:30 a.m.-3:00 p.m.
Alternate hours available by appointment

MY GHOST AT HOME
AUGUST 31-SEPTEMBER 21, 2011
Opening Reception | Wednesday, August 31, 4:00-6:00 p.m.

The joining, multivalent forms of the painted figures and environments in *My Ghost at Home* enact a negotiation between otherworldly, haunting and the real-world physicality of matter. The works of **Qil Riley** (MFA 2012), **Brian Rush** (MFA 2012), and **Josh Dille** (MFA 2012) stage an aesthetic that foregrounds imperfection as a record of the artist's hand in the making. Like a work in an old house, these artworks are bound to inescapable or tragicomic circumstances exhibiting the abilities of self-awareness and reflexivity that enables a direct emotional response to visual experience.

NO MORE, NO LESS.
OCTOBER 6-27, 2011
Opening Reception | Thursday, October 6, 4:00-6:00 p.m.

Alison Wade's (MFA 2012) sculpture and prints rely on a calibrated balance between seemingly disparate elements. Margins of negative space and points of connection both actual and implied, are visually as important as the more materially substantial elements. Structurally aware of the specific relationships of the parts and their coherence of the whole, the viewer senses a new logic, one that invites investigation and interpretation. In *No More, No Less*, Wade installs these works in conversation with one another, arranging them so that connections (perhaps one's navigation of space, the appearance of certain volumes, ability to reach gravity and to remain standing) speaks to hope as well as physics.

THE DAILY WEAVING CONSTITUTION: FROM TEXT TO TEXTILE
NOVEMBER 17-DECEMBER 6, 2011
Opening Reception | Thursday, November 17, 4:00-6:00 p.m.

The *Daily Weaving Constitution* is a collection of projects that combine the act of weaving and producing the daily meals through the act of weaving within a recursive rule-based system in the process. **Charles Schneider** (MFA 2012), **Arin Han** (MFA 2012), and **Alexandra Miskhan** (MFA 2012) reveal the form and their words that are framed both topographically and historically, suggesting an exploration of the texture of our world. Their daily practice of weaving is an artistic narrative that includes words and the ever-changing words of the three artists. The consensus-based rules for the woven cloth create not only a weaving, but also a record of collaboration, social interaction, and a system of interpreting information, as well as the object itself.

BARING INVESTIGATION

NOVEMBER 17-DECEMBER 16, 2011
Opening Reception | Thursday, November 17, 4:00-6:00 p.m.

Working on the studio's entry is a regular, spontaneous process. Although it takes many different forms and often is not present in the finished work, research is a necessary and driving force in many artists' practices. Playing with text, images, sounds, objects, and experiences can fuel an artist's understanding of his/her chosen study. *Baring Investigation* is a collection of student work in a multitude of forms and in various stages of completion that makes us rethink what the word "research" can mean.

Submission information at saic.edu/sugs



GREEN'S

GREEN'S
In the neighborhood,
where you need us.

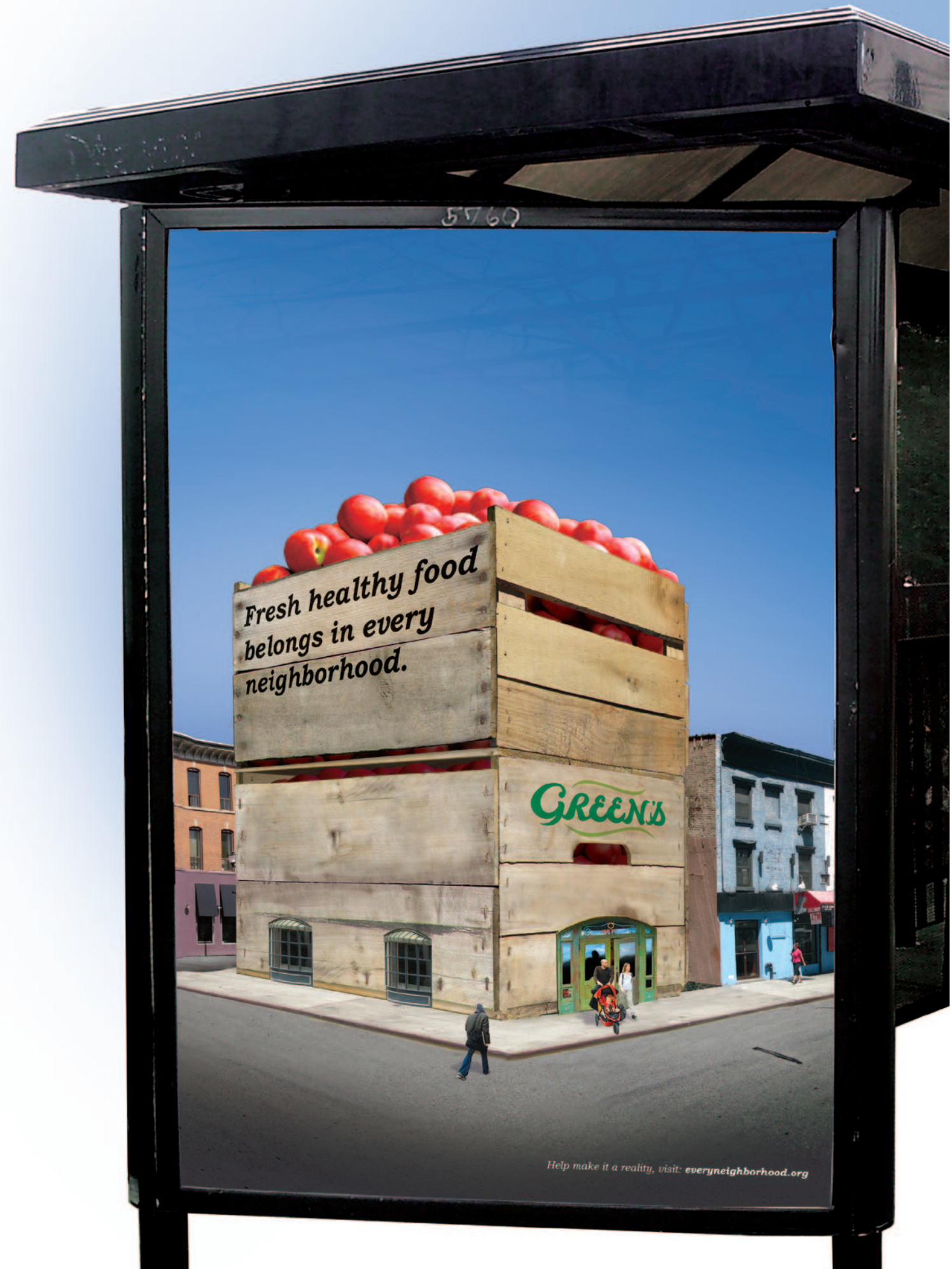
GREEN'S
5455 Delridge Way
Seattle, WA 98106



GREEN'S Green Jefferson
Overseer
GreensProduce.org 5455 S. Delridge Way,
Seattle, WA 98106
206.438.9247
greens@greensproduce.org

In the neighborhood, where you need us.

5455 Delridge Way, Seattle, WA 98106 | 206.938.3242 | GreensProduce.org



Help make it a reality, visit: everyneighborhood.org